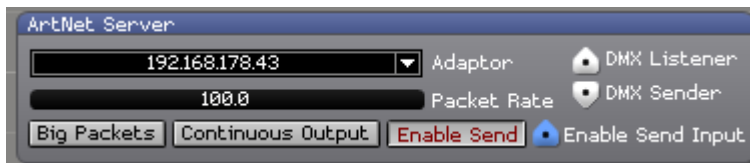


Ai Modules

# ArtNet Server

<b>section</b>	Network
<b>short description</b>	provides connectivity for Artnet inputs and outputs of all sorts
<b>licence level</b>	Anjuna
<b>ports</b>	DMX Sender [multipurpose] - patch this e.g. to an <a href="#">ArtNet Input Large</a> module in order to make it receive Artnet
	DMX Listener [multipurpose]
	Enable Send Input [control/numeric]
	Input 0~23 [control/numeric] - the data to be send on the respective channel
	Output 0~23 [control/numeric] - the data to received for the respective channel
<b>parameter</b>	Channel Assign 0~23 [text/numeric]
	Universe [text/numeric] - the Artnet universe
	Adaptor [dropdown select] - select the network card to be used for Artnet
	Continuous Output [togglebutton]
	Big Packets [togglebutton]
	Enable Send [togglebutton]
	Packet Rate [text/numeric]
<b>skins</b>	<b>Default</b> , compact

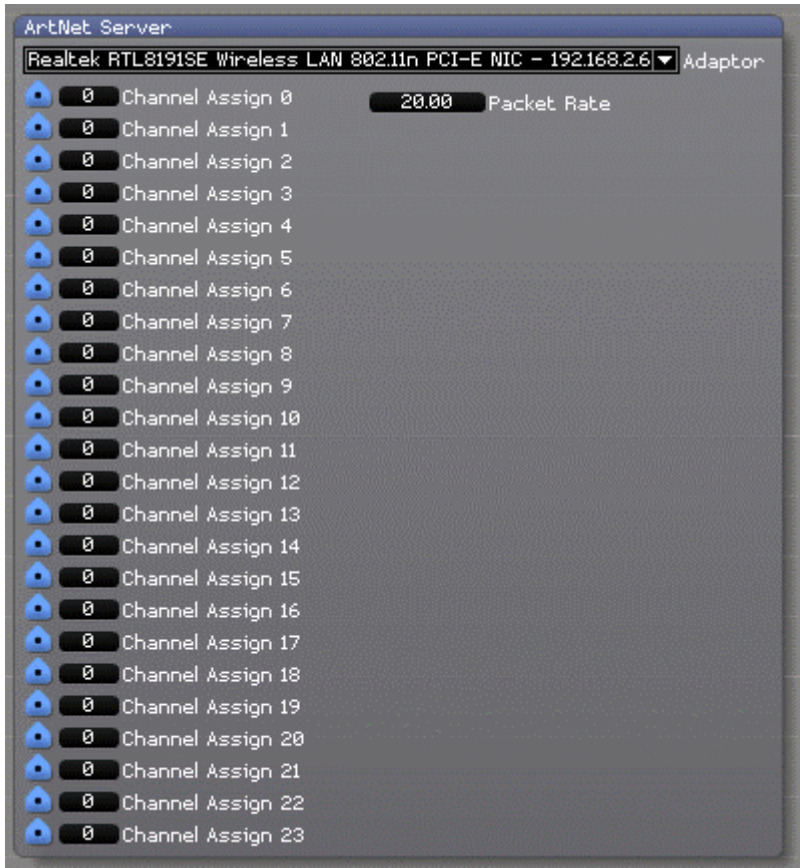


## used in example

- [Visualiser: Moving Matrix](#)

## Manual

Converts incoming control data into Artnet data and sends it to the selected channel, universe and Artnet adaptor.



From:  
<https://www.avosupport.de/wiki/> - AVOSUPPORT

Permanent link:  
[https://www.avosupport.de/wiki/ai/modules/network/artnet\\_server?rev=1540140813](https://www.avosupport.de/wiki/ai/modules/network/artnet_server?rev=1540140813)

Last update: 2018/10/21 16:53

