

Controlling Reaper from Titan on the same PC

(inspired by Oliver Waits, December 2019)

The idea is to control Reaper (see [Software List](#)) in a similar way like [Winamp](#), i.e. start, stop, pause etc.

Prerequisites

1. Titan PC-Suite, from v13 on (AvoKey required)
2. loopMIDI (see [Software List](#), to route the MIDI signal from one program to another)
3. Reaper (see [Software List](#))
4. macros to send MMC commands, see [MIDI Machine Control](#)
5. at least one music track to play with 😊

Make it run

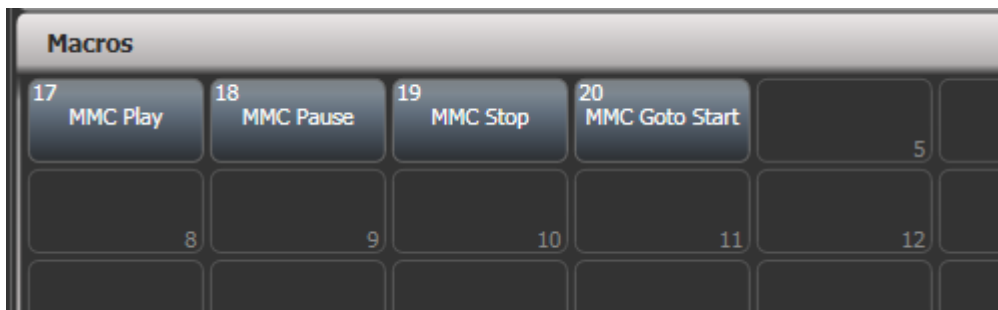
1. loopMIDI

This needs to be started (usually: automatically when Windows starts). By default it provides a virtual MIDI port named loopMIDI Port:



2. Titan PC Suite

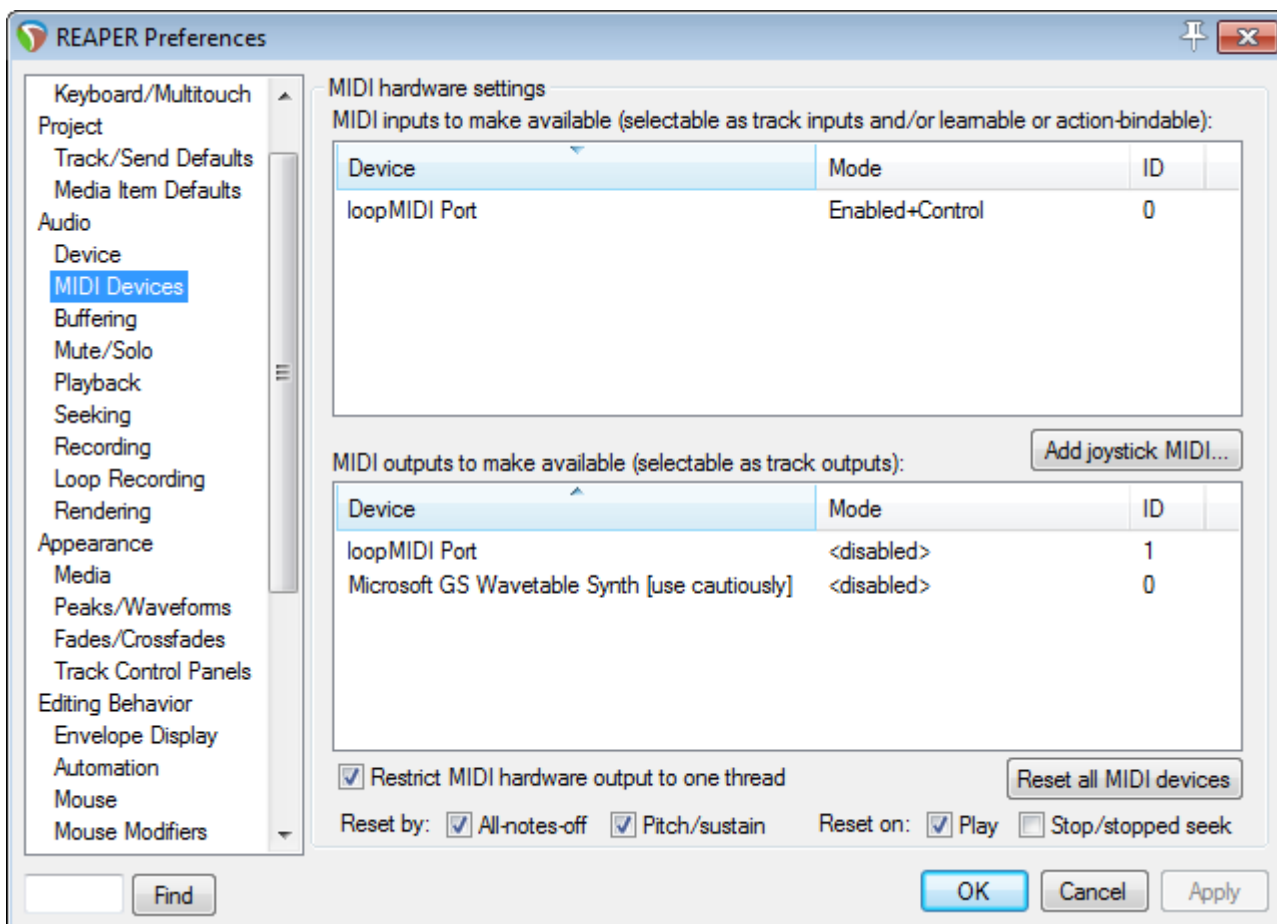
Launch Titan PC Suite, load the [MMC macros](#) and copy the macros you plan to use on buttons as you like:



3. Reaper

Launch Reaper and load a track.

In the Options menu select Preferences - this opens the preferences window. Find MIDI devices in the Audio section. This should list loopMIDI Port as MIDI input:



Right-click on loopMIDI Port input and either enable input for control messages from the menu...



... or select Configure input... and make the settings there:



Confirm the settings with OK to close the preferences window.

4. Try it out

Essentially this should work straight away: in Titan, fire the macro MMC Play and Reaper should immediately start playing - but see below. This also works together with Reaper sending Timecode back into Titan, like described in [Sending Timecode from Reaper to Titan on the same PC](#)

Some caveats I found:

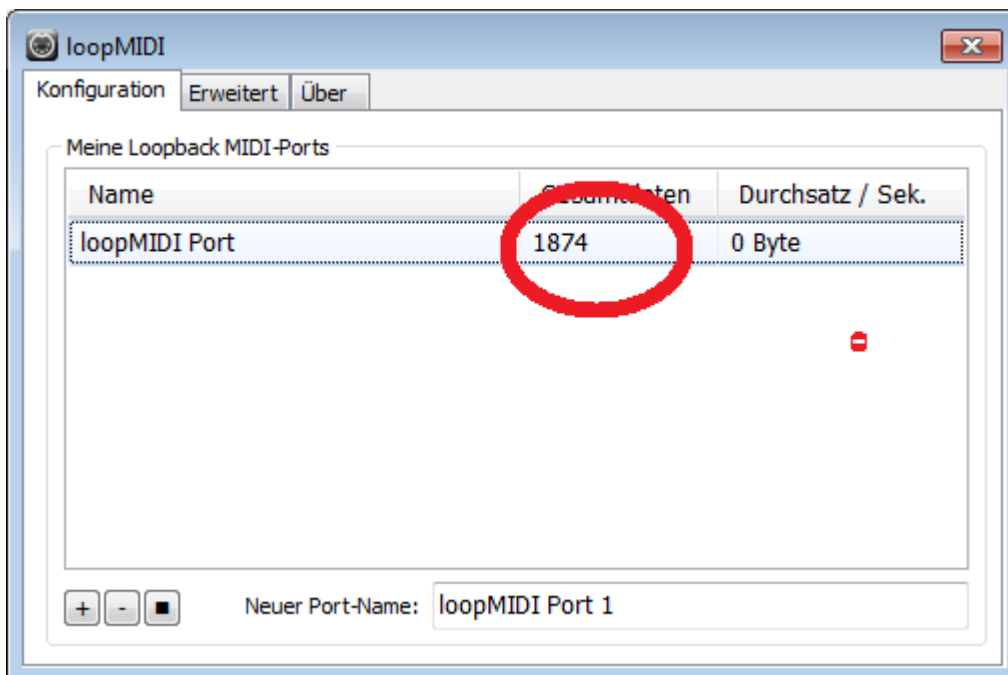
- it looks like Reaper wants to be started internally at first before listening to MMC. Thus, you at first need to hit Play in Reaper and stop this with MMC - after this you can play/pause/stop from MMC as you like
- reaper seems to be ignorant to device IDs: when changing the macros to a designated device ID (by default it sends to 7F which is All Devices) Reaper still listens and reacts, even with another ID selected in Reaper

5. How to debug

If things do not work as expected then there are some tools which help finding the fault:

5.1 loopMIDI

loopMIDI shows the number of transmitted data. This number increases with every command. If this number does not increase then Titan doesn't send data.



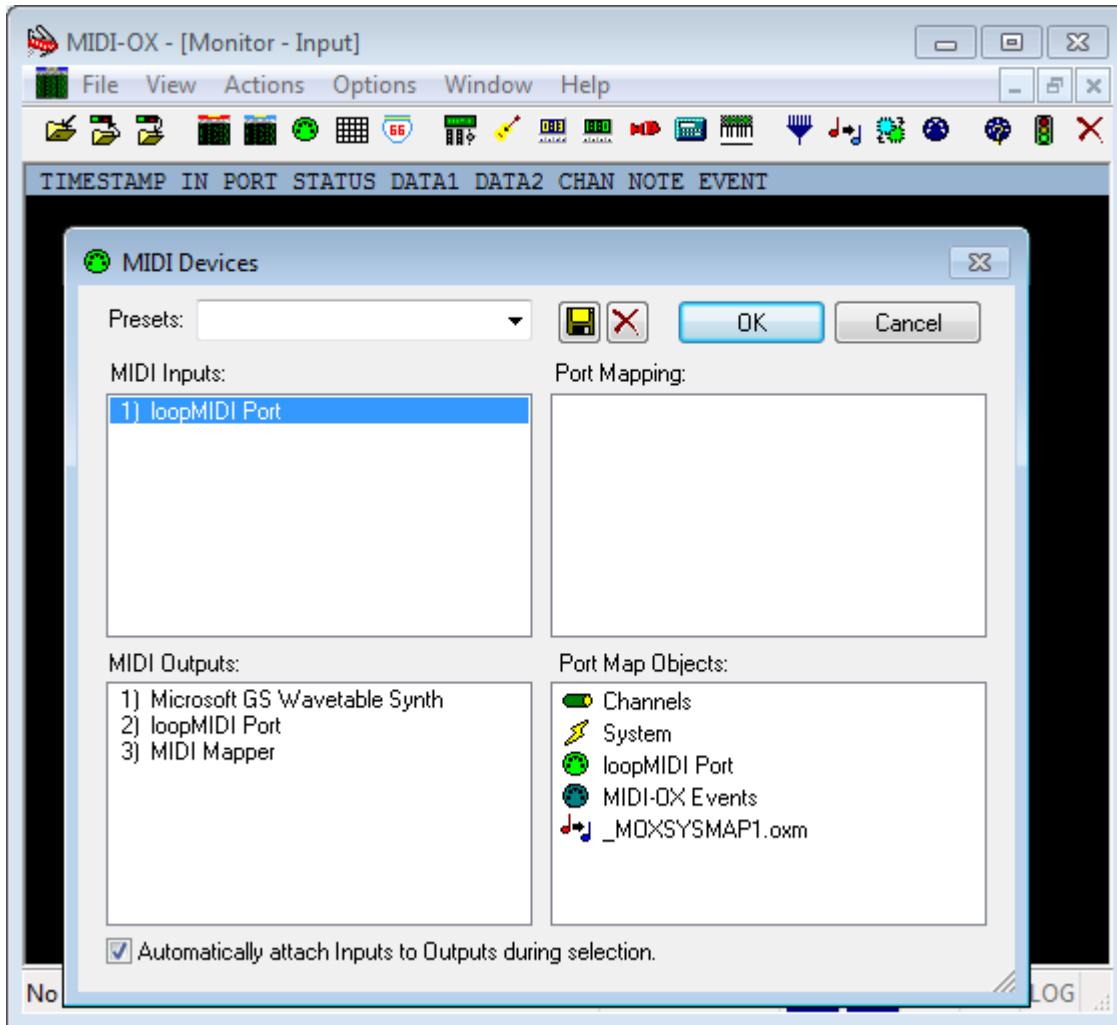
5.2 USB Expert Console

Open the USB Expert Console. This must show loopMIDI Port 1 as connected panel (top-left). Select the MIDI tab top-right, click Watch MIDI, in the MIDI watcher window select MIDI Input an Raw MIDI. Now, as you send a command, it is shown in the MIDI watcher:



5.3 MIDI-OX

Install and launch MIDI-OX (see [Software List](#)). From the Options menu select MIDI Devices. Make sure loopMIDI Port is listed as MIDI Input but isn't mapped to any output (yes, you can create a feedback loop, and yes, you do not want to do this...)



From the View menu select Input Monitor.... In this window, all incoming MIDI data are shown. You will see anything when you fire a command in Titan:

The screenshot shows the MIDI-OX application window titled "MIDI-OX - [Monitor - Input]". The window has a menu bar with "File", "View", "Actions", "Options", "Window", and "Help". Below the menu bar is a toolbar with various icons. The main area is a black terminal window with yellow text showing MIDI data. The data is organized into columns: TIMESTAMP, IN, PORT, STATUS, DATA1, DATA2, CHAN, NOTE, and EVENT. The data shows several "System Exclusive" events with timestamps like 0004F57B, 000506ED, 00050BBE, and 00051056. The status is consistently "F0". The channel is "6" for the first three events and "13" for the last one. The event names are "System Exclusive". The bottom status bar shows "No Output Device" and "1 Input Device" with buttons for "REC", "SYX", "MAP", "KYB", and "LOG".

TIMESTAMP	IN	PORT	STATUS	DATA1	DATA2	CHAN	NOTE	EVENT
0004F57B	1	--	F0	Buffer:		6	Bytes	System Exclusive
SYSX: F0 7F 7F 06 02 F7								
000506ED	1	--	F0	Buffer:		6	Bytes	System Exclusive
SYSX: F0 7F 7F 06 01 F7								
00050BBE	1	--	F0	Buffer:		6	Bytes	System Exclusive
SYSX: F0 7F 7F 06 09 F7								
00051056	1	--	F0	Buffer:		13	Bytes	System Exclusive
SYSX: F0 7F 7F 06 44 06 01 00 00 00 00 00 F7								

From:
<https://www.avosupport.de/wiki/> - AVOSUPPORT

Permanent link:
https://www.avosupport.de/wiki/external/examples/reaper_mmc_on_same_pc

Last update: 2020/02/13 12:49

