

Controlling Reaper from Titan on the same PC

(inspired by Oliver Waits, December 2019)

The idea is to control REaper (see [Software List](#)) in a similar way like [Winamp](#), i.e. start, stop, pause etc.

Prerequisites

1. Titan PC-Suite, from v13 on (AvoKey required)
2. loopMIDI (see [Software List](#), to route the MIDI signal from one program to another)
3. Reaper (see [Software List](#))
4. macros to send MMC commands, see [MIDI Machine Control](#)
5. at least one music track to play with 😊

Make it run

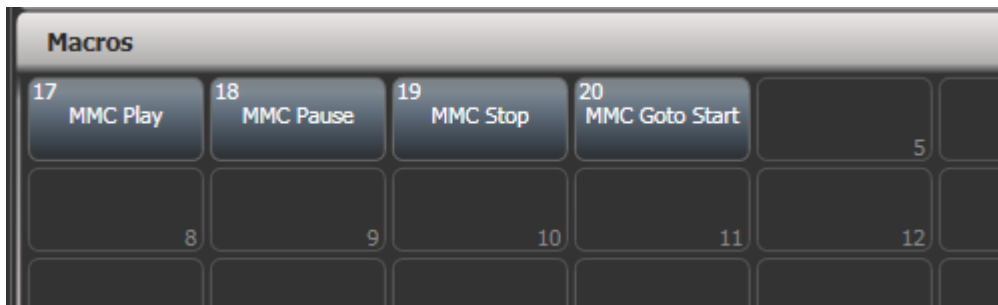
1. loopMIDI

This needs to be started (usually: automatically when Windows starts). By default it provides a virtual MIDI port named loopMIDI Port:



2. Titan PC Suite

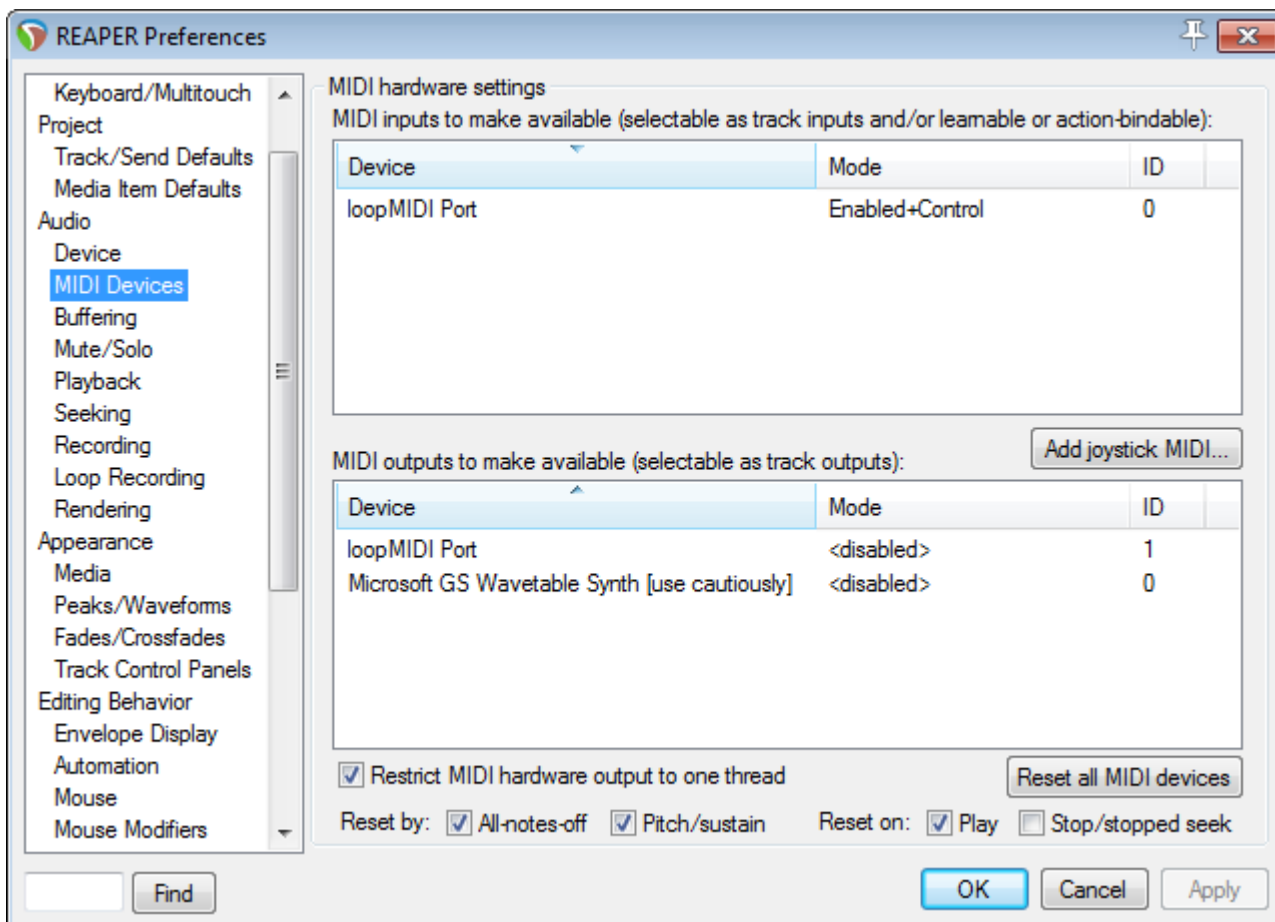
Launch Titan PC Suite, load the [MMC macros](#) and copy the macros you plan to use on buttons as you like:



3. Reaper

Launch Reaper and load a track.

In the Options menu select Preferences - this opens the preferences window. Find MIDI devices in the Audio section. This should list loopMIDI Port as MIDI input:



Right-click on loopMIDI Port input and either enable input for control messages from the menu...



... or select Configure input... and make the settings there:



Confirm the settings with OK to close the preferences window.

4. Try it out

Essentially this should work staright away: in Titan, fire the macro MMC Play and Reaper should immediately start playing - but see below. This also works together with Reaper sending Timecode back into Titan, like described in [Sending Timecode from Reaper to Titan on the same PC](#)

Some caveats I found:

- it looks like Reaper wants to be started internally at first before listening to MMC. Thus, you at first need to hit Play in Reaper and stop this with MMC - after this you can play/pause/stop from MMC as you like
- reaper seems to be ignorant to device IDs: when changing the macros to a designated device ID (by default it sends to 7F which is All Devices) Reaper still listens and reacts, even with another ID selected in Reaper

5. How to debug

If things do not work as expected there some tools whhich help finding the fault:

5.1 loopMIDI

From:
<https://www.avosupport.de/wiki/> - **AVOSUPPORT**

Permanent link:
https://www.avosupport.de/wiki/external/examples/reaper_mmc_on_same_pc?rev=1581592662

Last update: **2020/02/13 11:17**

