

# Controlling Reaper from Titan on the same PC

(inspired by Oliver Waits, December 2019)

The idea is to control REaper (see [Software List](#)) in a similar way like [Winamp](#), i.e. start, stop, pause etc.

## Prerequisites

1. Titan PC-Suite, from v13 on (AvoKey required)
2. loopMIDI (see [Software List](#), to route the MIDI signal from one program to another)
3. Reaper (see [Software List](#))
4. macros to send MMC commands, see [MIDI Machine Control](#)
5. at least one music track to play with 😊

## Make it run

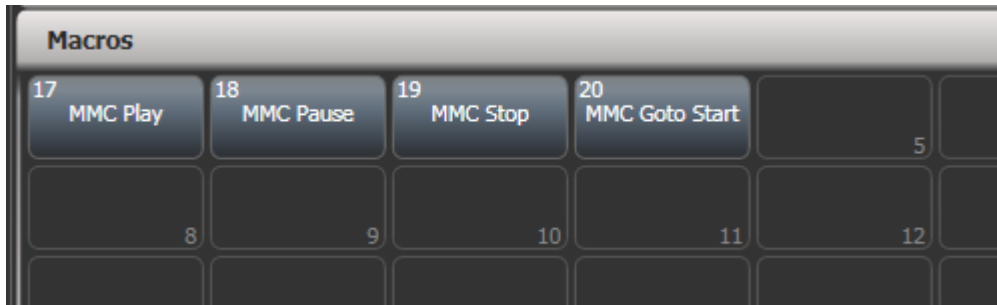
### 1. loopMIDI

This needs to be started (usually: automatically when Windows starts). By default it provides a virtual MIDI port named loopMIDI Port:



## 2. Titan PC Suite

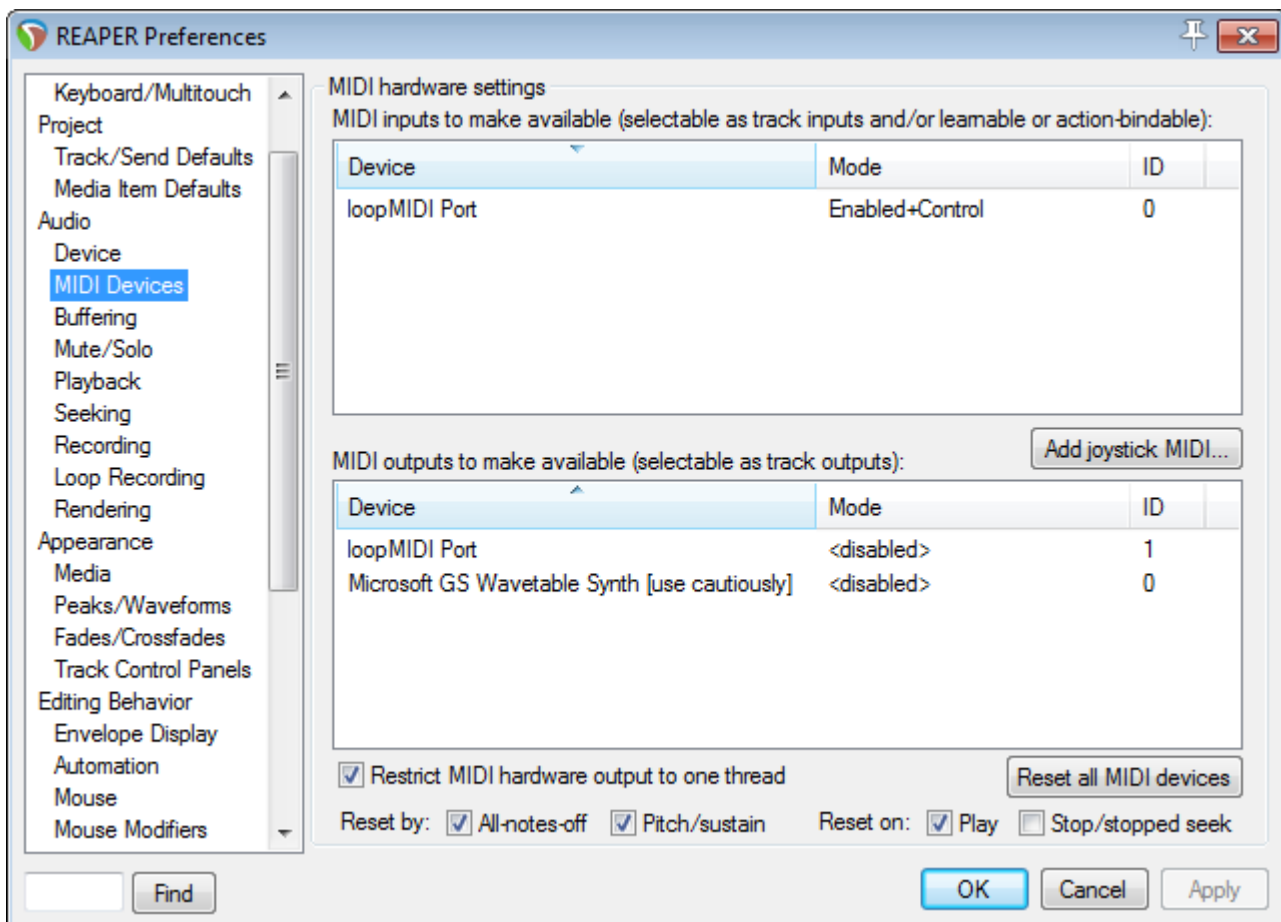
Launch Titan PC Suite, load the [MMC macros](#) and copy the macros you plan to use on buttons as you like:



## 3. Reaper

Launch Reaper and load a track.

In the Options menu select Preferences - this opens the preferences window. Find MIDI devices in the Audio section. This should list loopMIDI Port as MIDI input:



Right-click on loopMIDI Port input and either enable input for control messages from the menu...



... or select Configure input... and make the settings there:



Confirm the settings with OK to close the preferences window.

## 4. Try it out

Essentially this should work staright away: in Titan, fire the macro MMC Play and Reaper should immediately start playing - but see below. This also works together with Reaper sending Timecode back into Titan, like described in [Sending Timecode from Reaper to Titan on the same PC](#)

Some caveats I found:

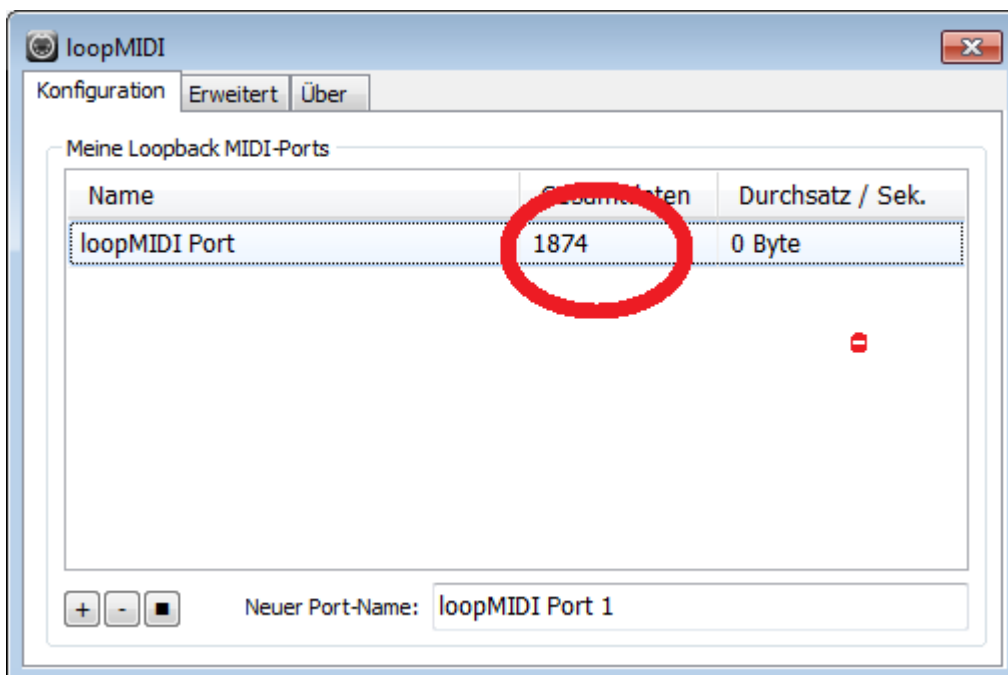
- it looks like Reaper wants to be started internally at first before listening to MMC. Thus, you at first need to hit Play in Reaper and stop this with MMC - after this you can play/pause/stop from MMC as you like
- reaper seems to be ignorant to device IDs: when changing the macros to a designated device ID (by default it sends to 7F which is All Devices) Reaper still listens and reacts, even with another ID selected in Reaper

## 5. How to debug

If things do not work as expected then there some tools which help finding the fault:

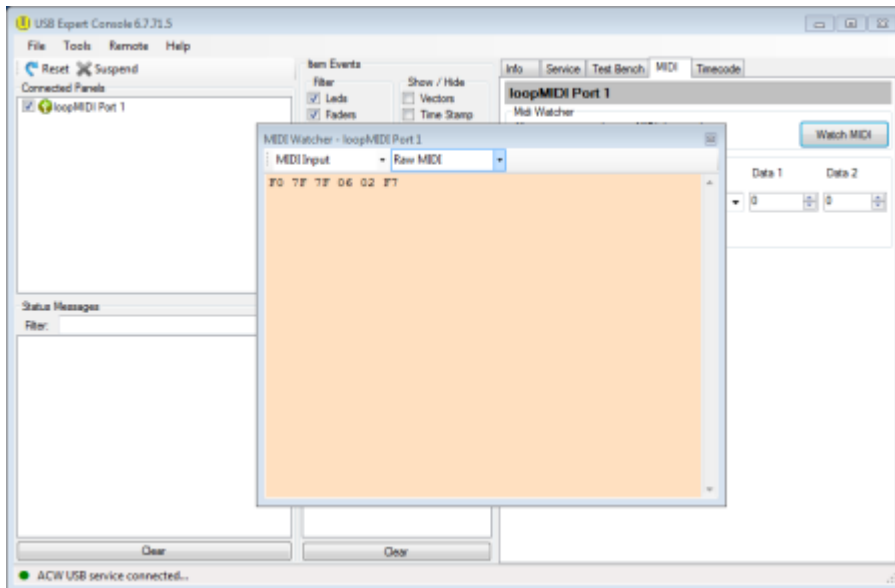
### 5.1 loopMIDI

loopMIDI shows the number of transmitted data. This number increases with every command. If this number does not increase then Titan doesn't send data.



## 5.2 USB Expert Console

Open the USB Expert Console. This must show loopMIDI Port 1 as connected panel (top-left). Select the MIDI tab top-right, click Watch MIDI, in the MIDI watcher window select MIDI Input an Raw MIDI. Now, as you send a command, it is shown in the MIDI watcher:



From:  
<https://www.avosupport.de/wiki/> - AVOSUPPORT

Permanent link:  
[https://www.avosupport.de/wiki/external/examples/reaper\\_mmc\\_on\\_same\\_pc?rev=1581593269](https://www.avosupport.de/wiki/external/examples/reaper_mmc_on_same_pc?rev=1581593269)

Last update: 2020/02/13 11:27

