

Special

The Fixture Circle

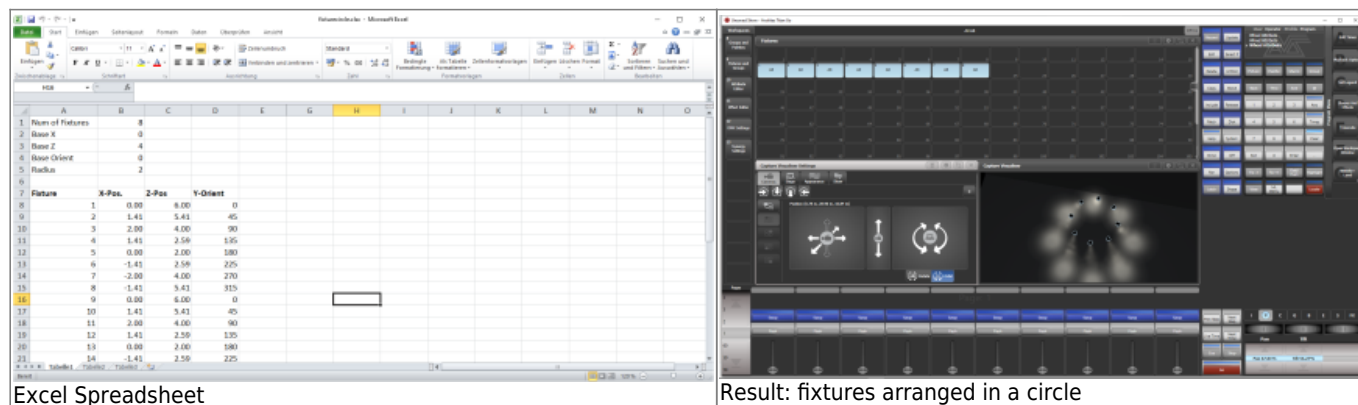
Sebastian Beutel, April 2020

Idea: <https://www.facebook.com/groups/Avolites/permalink/1848601835272042/>

How to arrange your fixtures like on a circle truss:

- download fixturecircle.xlsx
- open it in MicroSoft Excel
- enter base values
 - Number of fixtures per full circle
 - Base X/Base Z as center of the circle
 - Base orientation as how your fixtures would be orientated normally
 - Radius: the size of the circle
- the cells below show the values for X-Pos, Z-Pos and Y-Rot. Enter them as capture values. Your fixtures are now arranged in a circle.

Update - See below for a mobile friendly HTML version



HTML version

Alternatively here is an HTML version which you can also use without Excel:

<https://www.avolites.de/downloads/fixturecircle>

You can also use it here:

From: <https://www.avosupport.de/wiki/> - AVOSUPPORT

Permanent link: <https://www.avosupport.de/wiki/tricks/fixturecircle?rev=1587133355>

Last update: 2020/04/17 14:22

